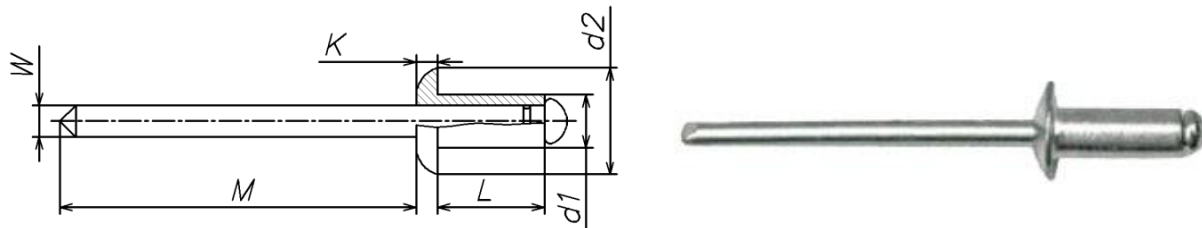




**КАТАЛОГ**  
**Вытяжные заклепки ЭЛНАР**  
**со стандартным и широким бортиком**  
**[www.elnar.ru](http://www.elnar.ru)**

**Вытяжные заклепки со стандартным бортиком**  
**Нержавеющая сталь А2/Нержавеющая сталь А2**



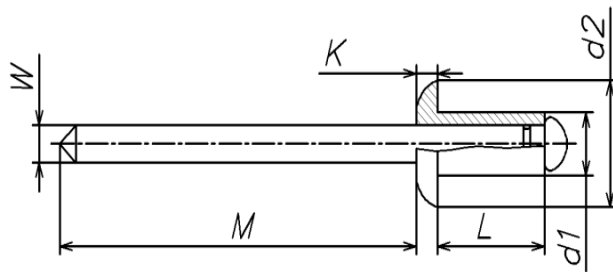
Гильза, мм.	d1	3	3,2	4	4,8	5	6	6,4
	d2	6,50	6,50	8,00	9,50	9,50	12,00	13,00
	k	0,80	0,80	1,00	1,10	1,10	1,50	1,80
Стержень, мм.	W	1,95	1,95	2,42	2,90	2,90	3,85	3,85
	M	27	27	27	27	27	31	31

Длина гильзы  
заклепки L, мм.

**Рекомендуемая толщина соединяемых материалов, мм.**

6		1,0 – 3,0	1,0 – 3,0	1,0 – 2,5				
8		3,0 – 5,0	3,0 – 5,0	2,5 – 4,5	1,5 – 4,0	1,5 – 4,0		
10		5,0 – 7,0	5,0 – 7,0	5,0 – 6,5	4,0 – 6,0	4,0 – 6,0	3,0 – 4,0	
12		7,0 – 9,0	7,0 – 9,0	6,5 – 8,5	6,0 – 8,0	6,0 – 8,0	4,0 – 6,0	4,0 – 6,0
14			9,0 – 11,0	8,5 – 10,0	8,0 – 9,5	8,0 – 9,5		
15		9,0 – 12,0					6,0 – 9,0	6,0 – 9,0
16			11,0 – 13,0	10,0 – 12,0	9,5 – 11,0	9,5 – 11,0		
18				12,0 – 14,0	11,0 – 13,0	11,0 – 13,0	9,0 – 12,0	9,0 – 12,0
20				14,0 – 16,0	13,0 – 16,0	13,0 – 16,0	10,0 – 14,0	12,0 – 14,0
22					15,0 – 17,0			
25				16,0 – 21,0	17,0 – 20,0	16,0 – 20,0	14,0 – 19,0	14,0 – 19,0
28								19,0 – 22,0
30					20,0 – 25,0	20,0 – 25,0	19,0 – 24,0	22,0 – 24,0
35					25,0 – 30,0			
40					30,0 – 35,0			

**Вытяжные заклепки с широким бортиком**  
**Нержавеющая сталь А2/Нержавеющая сталь А2**

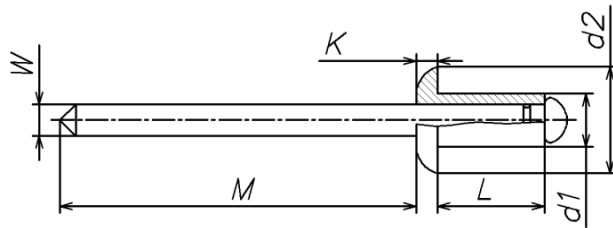


Гильза, мм.	d1	3,2	4	4,8	5
	d2	9,50	12,00	16,00	16,00
	k	2,00	2,50	2,50	2,50
Стержень, мм.	W	1,95	2,42	2,90	2,90
	M	27	27	27	27

**Рекомендуемая толщина соединяемых материалов, мм.**

Длина гильзы заклепки L, мм.	6	8	10	12	14	16	18	20	22	24	25	30	35
			1,5 – 3,5	1,5 – 3,0									
			3,5 – 5,0	3,0 – 5,0	2,5 – 4,0	2,5 – 4,0							
			5,0 – 7,0	5,0 – 6,5	4,0 – 6,0	4,0 – 6,0							
			7,0 – 9,0	6,5 – 8,5	6,0 – 8,0	6,0 – 8,0							
			9,0 – 11,0	8,5 – 10,5	8,0 – 10,0	8,0 – 10,0							
			11,0 – 13,0	10,5 – 12,5	10,0 – 12,0	10,0 – 12,0							
				12,5 – 14,5	12,0 – 14,0	12,0 – 14,0							
				14,5 – 16,5	14,0 – 16,0	14,0 – 16,0							
					16,0 – 18,0								
					18,0 – 20,0								
					16,5 – 21,5	16,0 – 21,0	16,0 – 21,0						
						21,0 – 25,0	21,0 – 25,0						
						25,0 – 30,0							

**Вытяжные заклепки со стандартным бортиком**  
**Алюминий/Нержавеющая сталь А2**

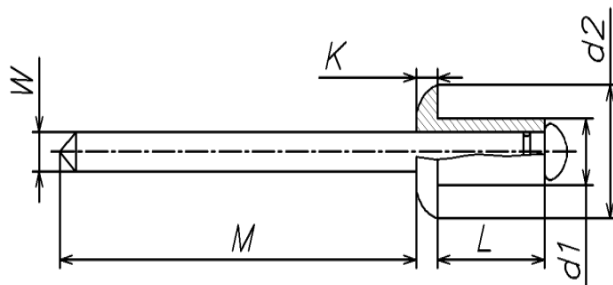


Гильза, мм.	d1	3,2	4	4,8
	d2	6,50	8,00	9,50
	k	0,80	1,00	1,10
Стержень, мм.	W	1,78	2,18	2,70
	M	27	27	27

**Рекомендуемая толщина соединяемых**  
**материалов, мм.**

Длина гильзы заклепки L, мм.	6	8	10	12	14	16	18	20	25	30	35
		1,5 – 3,5	1,5 – 3,0	1,5 – 2,5							
		3,5 – 5,5	3,0 – 5,0	2,5 – 4,0							
		5,5 – 7,0	5,0 – 6,5	4,0 – 6,0							
		7,0 – 9,0	6,5 – 8,5	6,0 – 8,0							
		9,0 – 11,0	8,5 – 10,5	8,0 – 10,0							
		11,0 – 13,0	10,5 – 12,5	10,0 – 12,0							
		13,0 – 15,0	12,5 – 14,5	12,0 – 14,0							
		15,0 – 17,0	14,5 – 16,5	14,0 – 16,0							
			16,5 – 21,5	16,0 – 20,0							
			21,5 – 26,0	20,0 – 25,0							
			26,0 – 30,0	25,0 – 30,0							

**Вытяжные заклепки с широким бортиком**  
**Алюминий/Нержавеющая сталь А2**



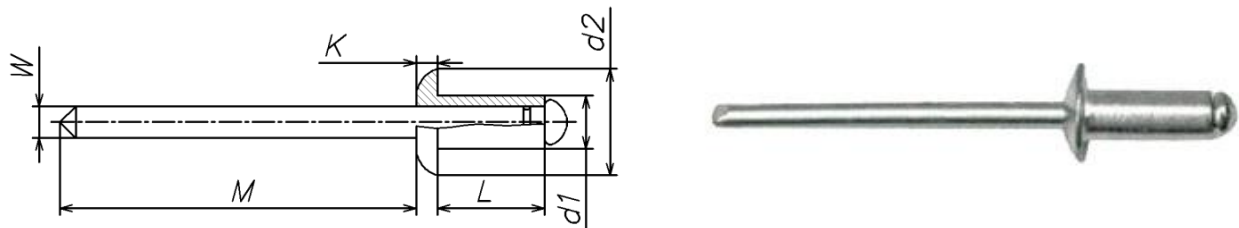
Гильза, мм.	d1	3,2	4	4,8
	d2	9,50	12,00	14,00
	k	2,00	2,50	2,50
Стержень, мм.	W	1,78	2,18	2,70
	M	27	27	27

**Рекомендуемая толщина соединяемых материалов, мм.**

Длина гильзы заклепки L, мм.

6	8	10	12	14	16	18	20	22	24	25	30	35
		1,5 – 3,5	1,5 – 3,0									
		3,5 – 5,0	3,0 – 5,0	2,5 – 4,5								
		5,0 – 7,0	5,0 – 6,5	4,5 – 6,0								
		7,0 – 9,0	6,5 – 8,5	6,0 – 8,0								
		9,0 – 11,0	8,5 – 10,5	8,0 – 10,0								
		11,0 – 13,0	10,5 – 12,5	10,0 – 12,0								
			12,5 – 14,5	12,0 – 14,0								
			14,5 – 16,5	14,0 – 16,0								
				16,0 – 18,0								
				18,0 – 20,0								
			16,5 – 21,5	16,0 – 21,0								
				21,0 – 25,0								
				25,0 – 30,0								

**Вытяжные заклепки со стандартным бортиком**  
**Алюминий/Углеродистая сталь**



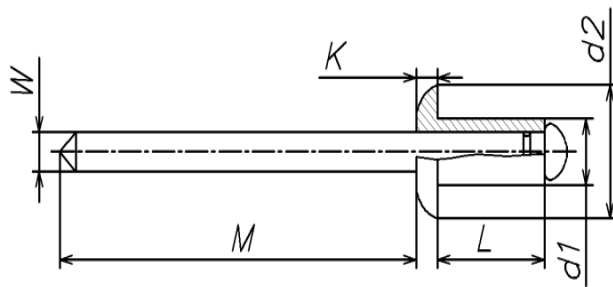
Гильза, мм.	d1	2,4	3	3,2	4	4,8	5	6	6,4
	d2	5,00	6,50	6,50	8,00	9,50	9,50	12,00	13,00
	k	0,65	0,80	0,80	1,00	1,10	1,10	1,50	1,80
Стержень, мм.	W	1,40	1,78	1,78	2,18	2,70	2,70	3,70	3,70
	M	27	27	27	27	27	27	31	31

Длина гильзы  
заклепки L, мм.

**Рекомендуемая толщина соединяемых материалов, мм.**

4		0,5 – 2,0							
6		2,0 – 4,0	1,0 – 3,5	1,0 – 3,5	1,0 – 3,0	1,5 – 2,5	1,5 – 2,5		
8		4,0 – 6,0	3,5 – 5,5	3,5 – 5,5	3,0 – 5,0	2,5 – 4,0	2,5 – 4,5	2,0 – 3,0	
10		6,0 – 8,0	5,5 – 7,0	5,5 – 7,0	5,0 – 6,5	4,0 – 6,0	4,5 – 6,0	3,0 – 5,0	3,0 – 4,0
12			7,0 – 9,0	7,0 – 9,0	6,5 – 8,5	6,0 – 8,0	6,0 – 8,0	5,0 – 7,0	4,0 – 6,0
14			9,0 – 11,0	9,0 – 11,0	8,5 – 10,5	8,0 – 10,0	8,0 – 10,0	7,0 – 9,0	6,0 – 8,0
16			11,0 – 13,0	11,0 – 13,0	10,5 – 12,5	10,0 – 12,0	10,0 – 12,0	9,0 – 11,0	8,0 – 10,0
18			13,0 – 15,0	13,0 – 15,0	12,5 – 14,5	12,0 – 14,0	12,0 – 14,0	11,0 – 13,0	10,0 – 12,0
20			15,0 – 17,0	15,0 – 17,0	14,5 – 16,5	14,0 – 16,0	14,0 – 16,0	13,0 – 15,0	12,0 – 14,0
25				17,0 – 22,0	16,5 – 21,5	16,0 – 21,0	16,0 – 20,0	15,0 – 20,0	14,0 – 18,0
30					21,5 – 26,0	21,0 – 25,0	20,0 – 25,0	20,0 – 25,0	18,0 – 23,0
35					26,0 – 30,0	25,0 – 30,0	25,0 – 30,0		23,0 – 28,0
40						30,0 – 35,0	30,0 – 35,0		28,0 – 33,0

**Вытяжные заклепки с широким бортиком**  
**Алюминий/Углеродистая сталь**



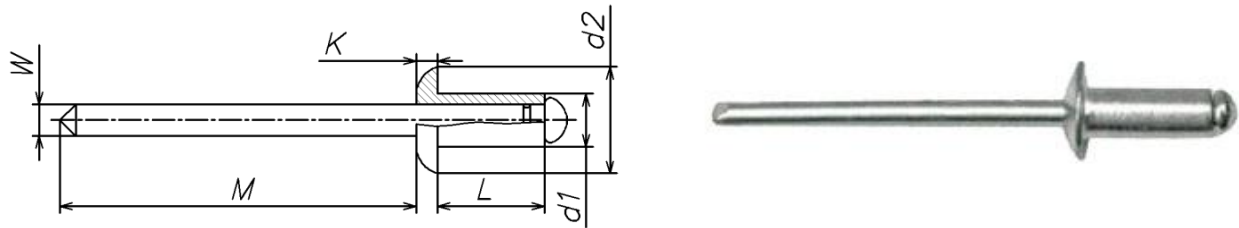
Гильза, мм.	d1	3,2	4	4,8	5
	d2	9,5	12	16	14
	k	2,00	2,50	2,50	2,50
Стержень, мм.	W	1,78	2,18	2,70	2,70
	M	27	27	27	27

**Рекомендуемая толщина соединяемых**  
**материалов, мм.**

Длина гильзы  
заклепки L, мм.

6		1,0 – 3,5	1,0 – 3,0		
8		3,5 – 5,0	3,0 – 5,0	1,5 – 4,0	2,5 – 4,5
10		5,0 – 7,0	5,0 – 6,5	4,0 – 6,0	4,5 – 6,0
12		7,0 – 9,0	6,5 – 8,5	6,0 – 8,0	6,0 – 8,0
14		9,0 – 11,0	8,5 – 10,5	8,0 – 10,0	8,0 – 10,0
16		11,0 – 13,0	10,5 – 12,5	10,0 – 12,0	10,0 – 12,0
18			12,5 – 14,5	12,0 – 14,0	12,0 – 14,0
20			14,5 – 16,5	14,0 – 16,0	14,0 – 16,0
22				16,0 – 18,0	
24				18,0 – 20,0	
25			16,5 – 21,5	16,0 – 21,0	16,0 – 21,0
30				21,0 – 25,0	21,0 – 25,0
35				25,0 – 30,0	

**Вытяжные заклепки со стандартным бортиком**  
**Углеродистая сталь/Углеродистая сталь**



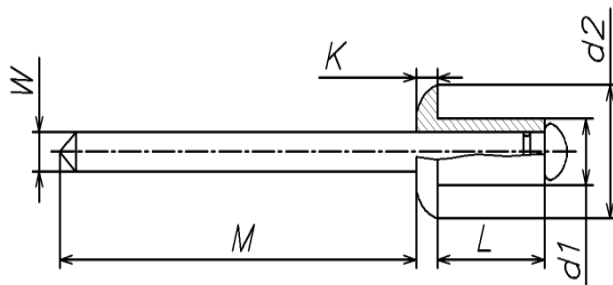
Гильза, мм.	d1	3	3,2	4	4,8	5	6	6,4
	d2	6,50	6,50	8,00	9,50	9,50	12,00	13,00
	k	0,80	0,80	1,00	1,10	1,10	1,50	1,80
Стержень, мм.	W	1,95	1,95	2,42	2,90	2,90	3,85	3,85
	M	27	27	27	27	27	31	31

Длина гильзы  
заклепки L, мм.

**Рекомендуемая толщина соединяемых материалов, мм.**

<b>6</b>		1,0 – 3,0	1,0 – 3,0	1,0 – 3,0	1,5 – 2,5			
<b>8</b>		3,0 – 5,0	3,0 – 5,0	3,0 – 5,0	2,5 – 4,0	2,5 – 4,0		
<b>10</b>		5,0 – 7,0	5,0 – 7,0	5,0 – 6,5	4,0 – 6,0	4,0 – 6,0	3,0 – 4,0	
<b>12</b>		7,0 – 9,0	7,0 – 9,0	6,5 – 8,5	6,0 – 8,0	6,0 – 8,0	4,0 – 6,0	3,0 – 6,0
<b>14</b>		9,0 – 11,0	9,0 – 11,0	8,5 – 10,5	8,0 – 10,0	8,0 – 10,0		
<b>15</b>							6,0 – 9,0	6,0 – 9,0
<b>16</b>		11,0 – 13,0	11,0 – 13,0	10,5 – 12,5	10,0 – 11,5	10,0 – 11,5		
<b>18</b>				12,5 – 14,5	11,5 – 13,5	11,5 – 13,0	10,0 – 12,5	9,0 – 12,0
<b>20</b>				14,5 – 16,5	13,5 – 15,0	13,0 – 15,0	12,5 – 14,0	12,0 – 14,0
<b>22</b>					15,0 – 17,0			14,0 – 16,0
<b>25</b>				16,5 – 21,5	17,0 – 20,0	15,0 – 20,0	14,0 – 19,0	16,0 – 19,0
<b>30</b>				21,5 – 26,0	20,0 – 25,0	20,0 – 25,0	19,0 – 24,0	19,0 – 24,0

**Вытяжные заклепки с широким бортиком**  
**Углеродистая сталь/Углеродистая сталь**



Гильза, мм.	d1	3,2	4	4,8	5
	d2	9,50	12,00	16,00	14,00
	k	2,00	2,50	2,50	2,50
Стержень, мм.	W	1,92	2,42	2,92	2,92
	M	27	27	27	27

**Рекомендуемая толщина соединяемых материалов, мм.**

Длина гильзы заклепки L, мм.

6	8	10	12	14	16	18	20	22	24	25	30	35
		1,0 – 3,0	1,0 – 3,0									
		3,0 – 5,0	3,0 – 5,0	2,5 – 4,0	2,5 – 4,0							
		5,0 – 7,0	5,0 – 6,5	4,0 – 6,0	4,0 – 6,0							
		7,0 – 9,0	6,5 – 8,5	6,0 – 8,0	6,0 – 8,0							
		9,0 – 11,0	8,5 – 10,5	8,0 – 10,0	8,0 – 10,0							
		11,0 – 13,0	10,5 – 12,5	10,0 – 12,0	10,0 – 12,0							
			12,5 – 14,5	12,0 – 14,0	12,0 – 14,0							
			14,5 – 16,5	14,0 – 16,0	14,0 – 16,0							
				16,0 – 18,0	16,0 – 18,0							
				18,0 – 20,0	18,0 – 20,0							
			16,5 – 21,5	16,0 – 21,0	16,0 – 21,0							
				21,0 – 25,0	21,0 – 25,0							
				25,0 – 30,0	25,0 – 30,0							